



Smart Green Farm Enterprise, Inc.

"Sustainable Production for Sustainable Empowerment"



Office Address: Wood Camp Community, Parker Paint
Paynesville City-Liberia

Phone Number: +231 (0) 886844873/077000075/

Email: greenfarmenterpriseinc@gmail.com

Follow us on Facebook: Smart Green Farm-Enterprise

"Sustainable Production For Sustainable Empowerment"

Mission:

To promote climate-smart agriculture for sustainable production, community empowerment, and strengthen market engagement to meet the socio-economic needs of producers and consumers.

Vision:

- a. To become the leading agribusiness enterprise in sustainable agricultural production and advisory extension services in Liberia
- b. To meet the market demand for agriculture products and extension advisory services through innovation, technology and research, while creating the livelihood opportunities for Liberians.

Core values and culture:

We exist to serve our clients. Our values dictate our approach, and our approach amplifies our value. Our values and culture are key for holistic transformation at Smart Green Farm Enterprise, Inc. We cherish these key values for our success:

Expert: Expertise and insightful evidence-based solutions are at the heart of everything we do.

Commitment: We are determined and energized to achieve our shared vision, mission, and strategy together with our customers, partners, and other stakeholders to achieve excellence in our results.

Trust: We seek to consistently build trust in every interaction by conducting ourselves in a professional and honest manner.

Innovation: We model innovative approaches, and we embrace the use of technology at all stages of the value chain.

Impactful: We deliver long-lasting change for farmers, their families, and their environments.

Passion: We are excited about the work we do and lead our clients to reach their full potential.

Gender and Social inclusion: Our approach is gender and social mainstream. We prioritize gender and social inclusion in our approach, which are gender-sensitive and include meaningful outcomes for women, youth and people with different abilities.

Research: Our approach is evidence-based, backed by research for decision-making for, policy makers, businesses and farmers.

Partnership: We leverage of approach on partnership and community as one of the key factors essential achieve our mission and vision.

Our approaches, products and services:

Pillar 1: Sustainable/Climate Smart Agriculture Production

We are directly involved in sustainable/climate-smart agriculture production. We also promote the production and multiplications of local seeds as part of our climate adaptation and resilience strategies. We also support individual/smallholder farmers, farmers-based organizations (FBOs), and cooperative-based organizations (CBOs) across Liberia to increase their productivity, incomes, and resilience to shock. We focus on climate-smart agriculture (CSA), access to improved inputs, soil and water management. Under the pillar, our key approaches include but not limited to:

- 1.1. Sustainable crop production
- 1.2. Sustainable livestock production
- 1.3. Green House farming
- 1.4. Small scale irrigation application and sustainable water management
- 1.5. Engage into other lawful sustainable/climate smart agriculture production activities.

Pillar 2: Agribusiness Venture

We sell our farm products and provide services to our clients to meet market demand. We are involve into aggregation, storage, processing and value addition as part of our agribusiness strategies to enhance producers' access to market and further reduce post-harvest loses. We also strive to strengthen agriculture supply chains by helping Micro, Small, and Medium Enterprises (MSMEs), farmers, and agribusinesses develop business skills to finance and enhance market linkages. We also provide consultancy in sustainable agribusiness development and management services. Our key activities under this pillar include but not limited to:

- 2.1. Processing of farm produce (value addition)
- 2.2. Sale of farm produce
- 2.3. Sale of pigs, piglets, and pig meat
- 2.4. Sale of day-old chicks, chicken and eggs
- 2.5. Sale of goats, ducks, snails, grass-cutters, etc.
- 2.6. Aggregation and marketing of farm produce
- 2.7. Dealing in Agro-inputs
- 2.8 Production and sale of animals feeds
- 2.9. Engage into other lawful agribusiness venture

Pillar 3: Management & Consultancy Services:

We have a pool of subject matter experts in each thematic area to provide quality services and solutions to our clients to meet their desired needs. Under our management and consulting services, the enterprise will be directly involved into the following services for income generation to ensure its operations and sustainability while meeting the needs of our clients. Our key activities under this pillar include but not limited to:

- 3.1. Quality agricultural extension service delivery
- 3.2 Agribusiness operation and management training for Cooperatives, smallholder farmers and individuals
- 3.3. Business plan development
- 3.4. Farm set up, management and record keeping

- 3.5. Sustainable crop and livestock production training
- 3.6. Small scale irrigation system development and setup
- 3.6 Infrastructure construction
- 3.7. Sustainable aquaculture services
- 3.8. Agriculture project proposal development
- 3.9. GIS application
- 3.10. Financial literacy and management training for cooperatives, smallholder farmers, businesses, etc.
- 3.11. Engage into other lawful management and consultancy services

Pillar IV: Climate and Environment:

The Cooperation shall engage into the promotion of healthy and sustainable environment through a participatory approach for the use of forest, land, and water resource management. It shall promote soil, water resources and forest conservation that are critical to sustainable food system, poverty reduction and resilience to climate change.

Under this thematic area, the Cooperation shall specifically engage into the following climate and environmental activities:

1. Engage into municipal waste management to promote clean and health city
2. Engage into research and consultancy for natural resources management and sustainable land and forest use
3. Engage into training in climate change and environmental issues
4. Provide training to farmers, organization, and government entities on climate change and mitigation strategies
5. Engage into other lawful climate and environmental activities

Organization Background:

Smart Green Farm Enterprise, Inc. is an agribusiness and social enterprise established to lead climate-smart agriculture production through sustainable production practices, provide agriculture advisory extension services, provide agribusiness advisory services, promote sustainable environment, and provide solution-based consulting services, while contributing to the growth and

development of the Liberian agriculture sector and creating sustainable job opportunities for Liberians.

Agricultural extension and other support services to farmers are key to enable them to improve their farms and non-farm income. These services are integral parts of most rural development policies in most developing countries around the world, and are often delivered to farmers by a variety of agencies, including the public, commercial, and voluntary sectors. However, despite several interventions made by the Government and development partners, there are still gaps in the delivery of adequate agriculture extension and advisory services. Many local and International NGOs have tried to fill the gap, yet there are still challenges in the delivery of extension and advisory services to farmers. These challenges include but are not limited to scarce resources, effectiveness and sustainability. Consistent with these challenges, it is essential therefore that Government and development partners enhance collaboration with private sector entities for improved, sustainable and impactful agriculture extension and advisory service delivery.

Through partnership and collaboration with private sector entities engaged in the agriculture value chain, the Government, development partners, businesses, and farmers will benefit from quality services that will ensure effectiveness, efficiency, accountability and sustainability.

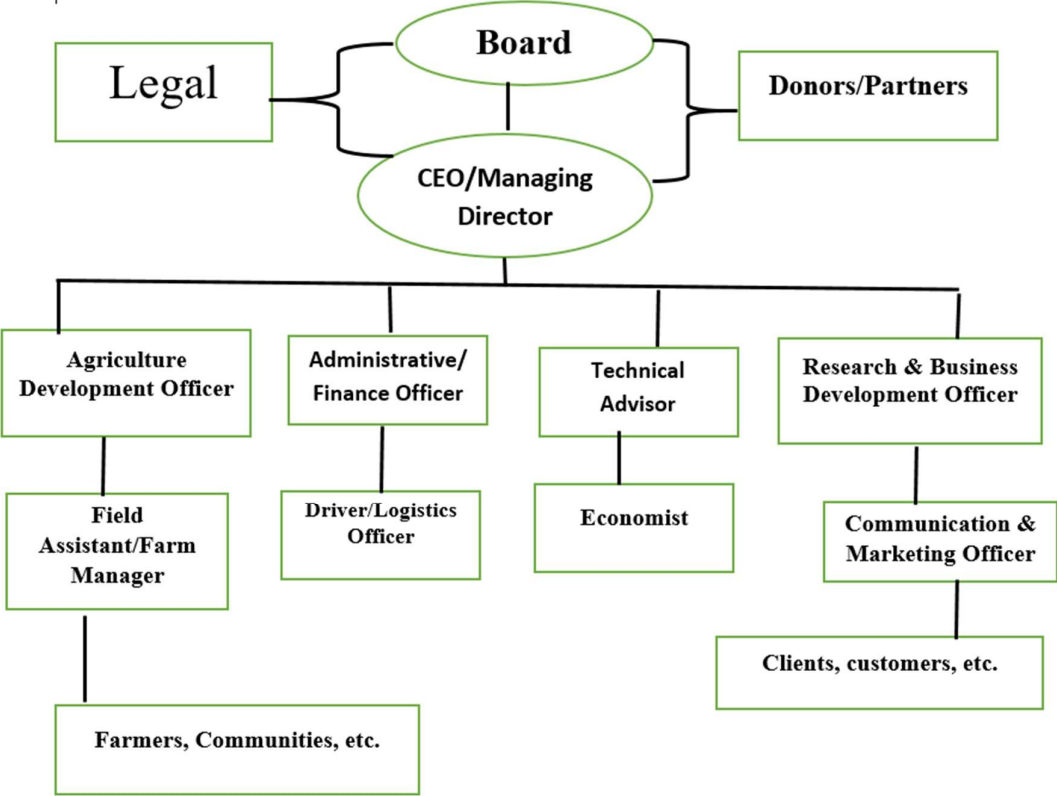
Additionally, as the population grows, the demands for food increases. This requires a significant effort for large scale and sustainable agriculture production, processing (value addition) that meets the needs of people, locally, nationally, regionally and globally.

Therefore, based on these gaps, the Smart Green Farm Enterprise, Inc. will work with farming communities, small and medium enterprises, businesses, government entities, and Non-Governmental organizations in addressing these issues affecting the agriculture value chain, while meeting market demands and ensuring a sustainable production, and creating job opportunities for Liberians.

Organizational Structure

As a Liberian owned agribusiness enterprise, **Smart Green Farm Enterprise, Inc.** is managed and operated by professionals from different backgrounds.

Organizational Structure



“Sustainable Production For Sustainable Empowerment”

Our Partners/Clients

We leverage of approach on partnership and community as one of the key factors essential achieve our mission and vision.

HELPING OUR PEOPLE EXCEL (HOPE)



About HOPE:

Helping Our People Excel (HOPE) is a legally registered CSO in Liberia whose mission is to promote women and children's social, economic, and educational empowerment through personal development opportunities, building strong community partnerships, policy review and advocacy.

About the Project:

In 2023, **Smart Green Farm Enterprise, Inc.** won a bid from HOPE to supply quality agriculture inputs and livestock to its beneficiaries under its EU/UN sponsored Spotlight Initiative project phase two (2). The project was focus on the provision of alternative economic livelihood for 800 female traditional practitioners in 11 of Liberia 15 counties including Grand Gedeh, Nimba, Bong, Lofa, Margibi, Grand Bassa, Rivercess, Montserrado, Grand Cape Mount, Bomi, and Gbarpolu.

Project Status: Ongoing (Completed)

Join us today let us make a difference together.

“Sustainable Production For Sustainable Empowerment”